

020-0910 Inside
Squeeze Release - Remote



This product was specifically designed for off-highway vehicle applications including agricultural and construction equipment that require a remote inside release that mounts into an existing tubing provided by the customer.

DESIGNED FOR:

- Medium to heavy weight doors for off-highway vehicle applications
- Doors where it is desirable to have the inside release remotely located to the latch location
- Use with 25mm (.98") diameter steel tubing—customer provided



www.trimarkcorp.com

TriMark Corporation
500 Bailey Avenue
P.O. Box 350
New Hampton, Iowa 50659
United States
Tel: 641-394-3188
Fax: 641-394-2392
1-800-447-0343
www.trimarkcorp.com

TriMark Europe
Cedar Court
Walker Road
Bardon Hill
Coalville LE67 1TU
United Kingdom
Tel: +44(0)1530 512460
Fax: +44(0)1530 512461
www.trimarkeu.com

FEATURES/BENEFITS:

- The inside release can be positioned at any point along the tube for convenient location to suit the door/cab design over direct lever releases
- Non-handed design is adaptable for door on either side of vehicle
- The inside release is connected by a rod or cable to the latch and includes an integrated return spring
- The cam detail in the inside release is reversible allowing the inside release to be actuated in the opposite direction providing flexibility in the product application
- Two versions available;
 - ◊ Version 1 installs without tools and snaps in the tubing
 - ◊ Version 2 requires (2) M5 thread forming cap screws and provides an anti-pinch squeeze handle

MATERIAL:

- Inside release components: Glass reinforced nylon

INSTALLATION:

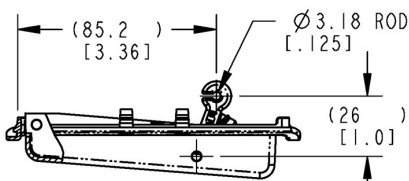
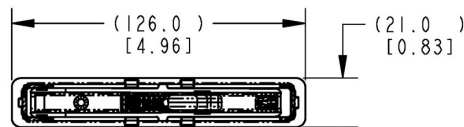
- The inside release sub-assembly installs into the pipe and includes a flange that covers the tubing cutout
- Version 1 snaps in the tubing
- Version 2 requires (2) M5 thread-forming cap screws

U.S. Patent No. 8,011,699

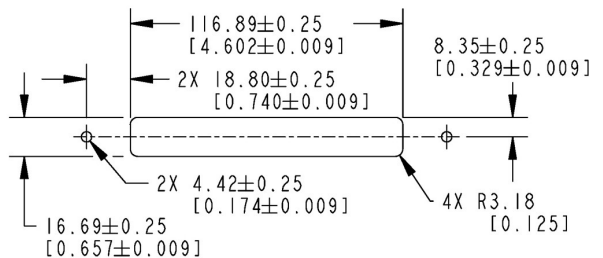
Caution: Product does not meet the locking requirements for FMVSS206.

All part dimensions are for reference only. Refer to individual part drawings for complete dimensions, specifications, and installation procedures. Engineering assistance and application drawings are available.

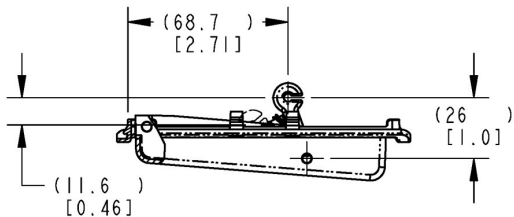
VERSION 1



REVERSED CAM ORIENTATION ASSEMBLY



RECOMMENDED CUTOUT



STANDARD CAM ORIENTATION ASSEMBLY



For more information visit
www.trimarkcorp.com

VERSION 2

